

Neuroprediction

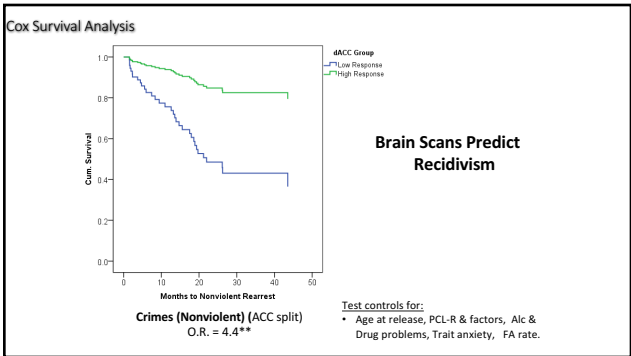
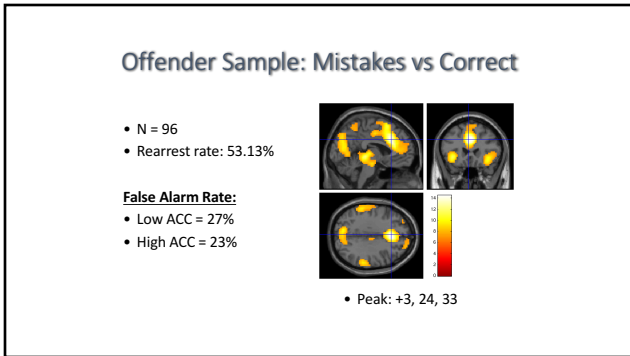
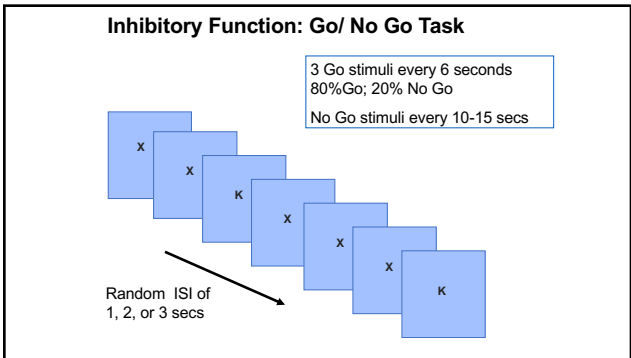
Prediction is Everywhere

- **Intake:** bail, drug court, diversion programs
- **Custody:** sentence length, security level, parole, civil commitment
- **Release:** treatment program assignments, medication, SVP status

Actuarial Prediction

Risk & Protective Factors

- Age
- Genetics
- Age at first offense
- Index offense type
- Mental Illness
- Alcohol/Substance abuse/dependence
- Employment
- Social support
- PCL-R
- Impulsivity



Actuarial Prediction Risk & Protective Factors

- Age
- Genetics
- Age at first offense
- Index offense type
- Mental Illness
- Alcohol/Substance abuse/dependence
- Employment
- Social support
- PCL-R
- Impulsivity

